

From: [McCroskey, Libby](#)
To: [Jaeckel, Gary William](#)
Subject: Hartsville/Trousdale County
Date: Monday, February 4, 2019 11:57:09 AM
Attachments:

Gary:

We have reviewed Article 4 of the Hartsville/Trousdale County charter, and it appears that the ambulance service (EMS), fire department, and emergency management agency(EMA) could be combined without the necessity of a charter amendment, but we have found no law on that issue and cannot give an opinion with certainty. A charter amendment would, of course, avoid any question on the matter.

All three departments are headed by the mayor. Counties are required to have an emergency management agency under TCA 58-2-110. The director is appointed by the mayor, subject to confirmation of the county legislative body. Counties are not required to have an ambulance service, but if they do the director would be appointed by the mayor, subject to confirmation by the county legislative body under TCA 5-6-106(c). Article 4 of the charter requires that there be a fire department headed by the mayor or such person as the mayor may appoint subject to confirmation of the commission. So there would be no issue with oversight when combining these three departments, as the mayor oversees all three.

Kevin Lauer, our Fire and Emergency Services Consultant, has advised them to look at Wilson County for an example of how to structure this. It's my understanding that Kevin has also been talking with them.

Libby

Libby McCroskey

Manager of Legal Services

County Technical Assistance Service
226 Anne Dallas Dudley Boulevard, Suite 400
Nashville, Tennessee 37219
libby.mccroskey@tennessee.edu

 **County Technical Assistance Service**
INSTITUTE FOR PUBLIC SERVICE



HARTSVILLE/TROUSDALE COUNTY GOVERNMENT

ORDINANCE #

AN ORDINANCE TO

WHEREAS, Article 4, Section 4.01 provides that the powers and duties allocated to the office of the Mayor may be delegated to and discharged through some administrative departments as may from time to time be created, and

WHEREAS, Article 4, Section 4.01 provides that the Commission may by ordinance establish or amend any plan of administrative organization, and

WHEREAS, Article 4, Section 4.02 provides that there shall be such directors and administrators as may from time to time be established by ordinance. Each shall be responsible to the Mayor for all duties entrusted to such director or administrator; and

WHEREAS, Article 4, Section 4.06 – Minimum Requirements, provides, in part, under subsection (c) A Fire Department, headed by the Mayor, or such person as the Mayor may appoint subject to confirmation by the Commission, which department shall be charged with fire fighting and fire prevention obligations throughout Hartsville/Trousdale County; and

WHEREAS, It has been determined that it is in the best interest of the community of Metro Hartsville/Trousdale County to combine several existing functional areas, including the Fire Department, Emergency Medical Services, and the Emergency Management Agency into one functional department, to be administered by an individual appointed by the Mayor; and

WHEREAS, This administrative department will be known as the Metro Hartsville/Trousdale Emergency Management Agency, incorporating the Fire Department, Emergency Medical Services, and Emergency Management as outlined in Exhibit A, Organizational Structure; and

WHEREAS, the County Commission has reviewed such recommendation and has conducted a public hearing prior to the second reading.

NOW, THEREFORE, BE IT ORDAINED BY THE HARTSVILLE/TROUSDALE COUNTY COMMISSION:

There shall be created an administrative department that will be known as the Metro Hartsville-Trousdale County Emergency Management Agency, which shall include the Current functional areas of the Fire Department, Emergency Medical Services, and the Emergency Management Agency. Such department will be directed by an administrator With the title of Emergency Management Director, who will be responsible to the County Mayor of Metro Hartsville-Trousdale County.

BE IT ENACTED that this ordinance shall take effect from and after its adoption, the public welfare requiring it.

First Reading:	1M			
	2m	YES	NO	ABS
	1M			
Close Public Hearing:	2m	YES	NO	ABS
	1M			
Second Reading:	2m	YES	NO	ABS

Approved:

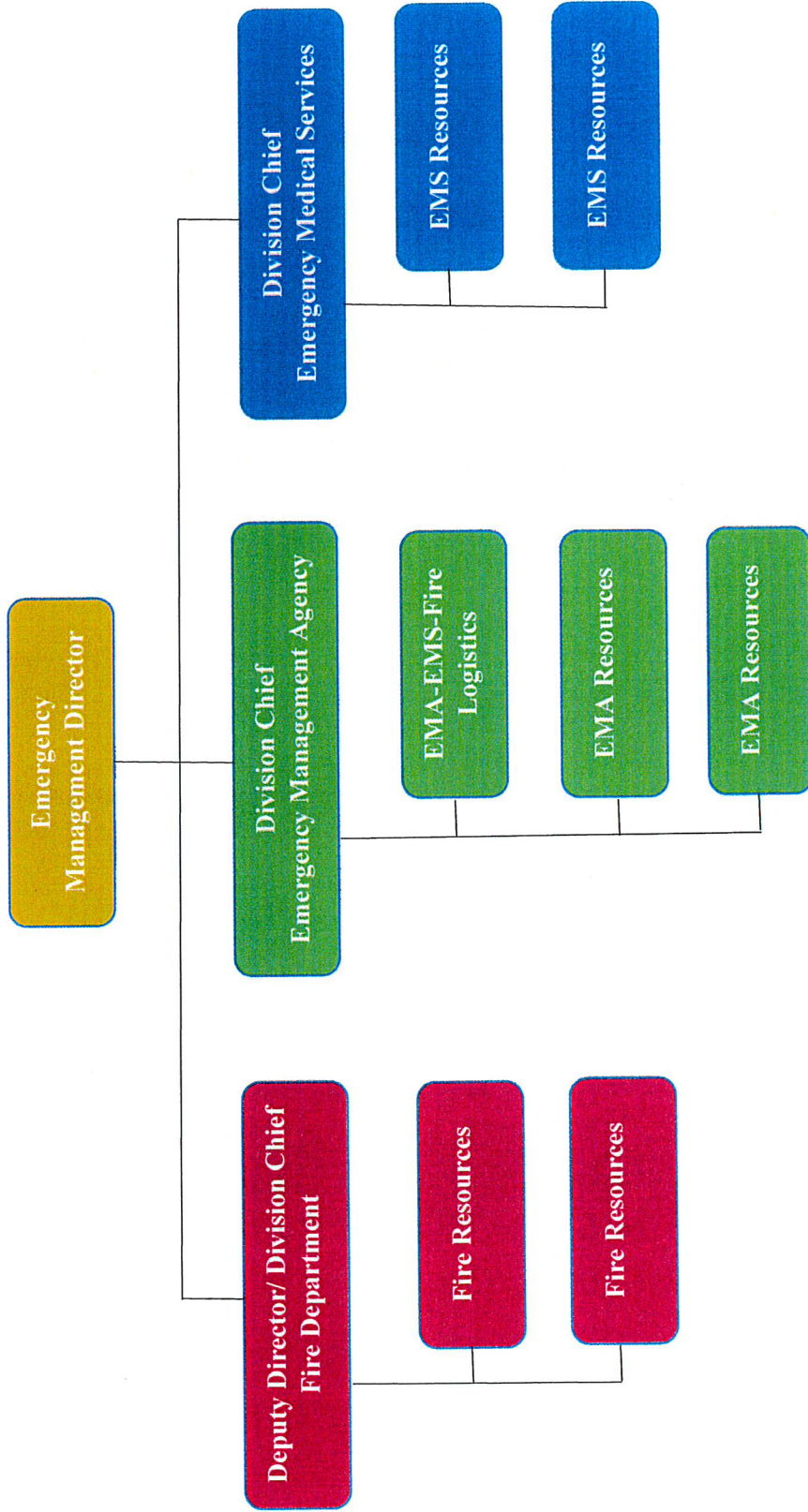
Attest:

Jerry Ford, Commission Chairman

Rita Crowder, County Clerk

Hartsville-Trousdale County Emergency Management Agency

Organizational Structure



Hartsville-Trousdale County Emergency Management Agency

- Emergency Management Agency-General Fund Division
- Fire Department-General Fund Division
- Emergency Medical Services Division-Enterprise Fund Division

Agency Organizational Chart

